

Console Shade Adjustable Leg Replacement

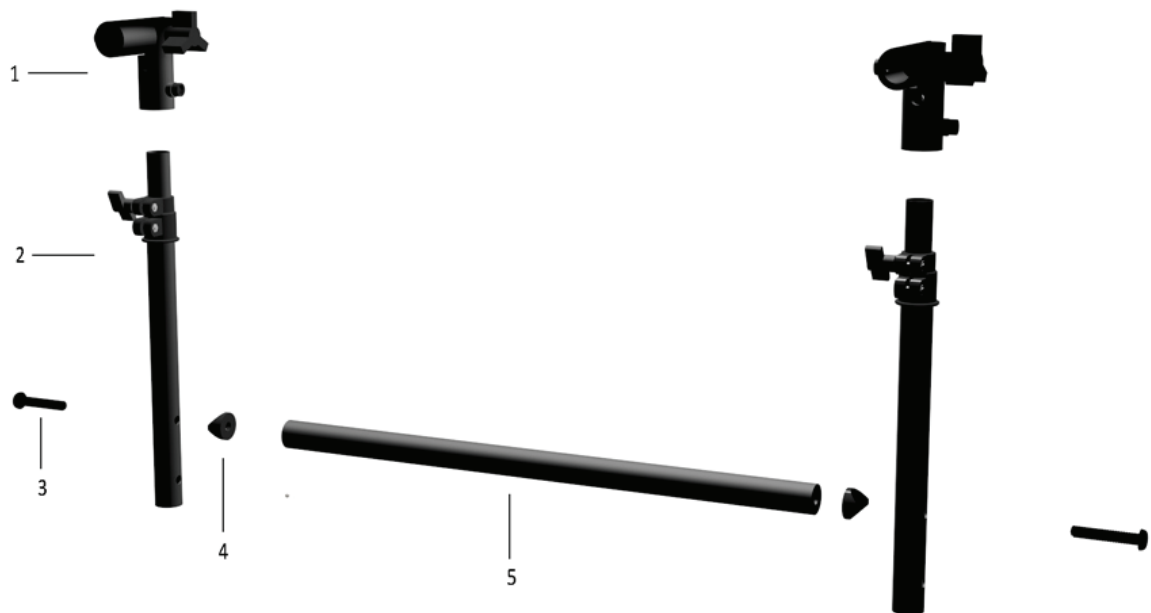
Tools Required: #2 or #3 Phillips Screwdriver

Available Adjustable Leg Sizes:

Short: Height Range 7" to 10"

Medium: Height Range 10" to 15"

Tall: Height Range 14" to 23"



Adjustable Leg Replacement:

To replace the adjustable legs for a different size... short, medium, or tall complete the following steps.

- Remove the hinges (1) from the top of the adjustable legs (2).*
- Remove the two screws (3) holding the cross support tube (5).*
- Replace the adjustable legs with the new adjustable legs.*
- Replace the two screws making sure the saddle washers (4) and cross support tube (5) in the order shown above.*
- Replace the hinges (1).*